

Gaber®

gaber.it



design Nation

**FINISHES | FINITURE 2022**

TECHNO-POLYMER / TECNOPOLIMERO



**05**  
Light blue / Azzurro



**99**  
Lavender / Lavanda



**98**  
Pale blue / Avio



**34**  
Light blue / Azzurro



**08**  
Blue / Blu



**09**  
Dark Blue / Blu scuro



**16**  
Indigo / Indaco



**11**  
Night Blue / Blu notte



**03**  
Light green / Verdino



**42**  
Green / Verde



**51**  
Sage green / Salvia



**35**  
Lime



**41**  
Green / Verde



**25** Olive Green  
Verde Oliva



**23** Military green  
Verde militare



**24** Forest green  
Verde foresta



**36**  
Mustard / Senape



**02**  
Yellow / Giallo



**38**  
Saffron / Zafferano



**07**  
Apricot / Albicocca



**33**  
Orange / Arancione



**20**  
Lobster / Aragosta



**06**  
Red / Rosso



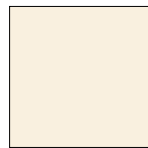
**12**  
Brick / Mattone



**26**  
Marsala



**22**  
Bordeaux



**01**  
Beige



**54**  
Sand / Sabbia



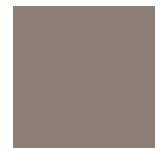
**18** Dusty Rose  
Polvere Rosa



**13**  
Brown / Marrone



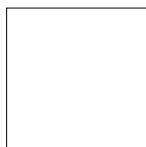
**52**  
Turtledove / Tortora



**55** Mineral Grey  
Grigio Minerale



**39**  
Brown / Marrone



**00**  
White / Bianco



**14**  
Pearl grey / Grigio perla



**04**  
Grey / Grigio



**21**  
Grey / Grigio



**10**  
Black / Nero



**46** Transp. green  
Verde trasp.



**45** Transp. red  
Rosso trasp.

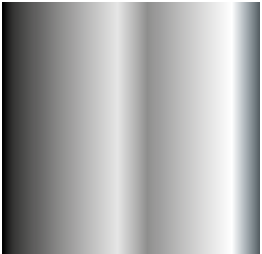


**47** Transp. Amber  
Ambra trasp.



**44** Transparent  
Trasparente

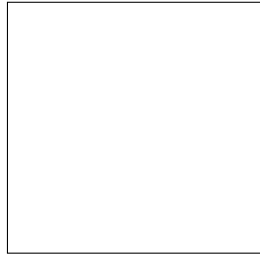
METAL FINISHES / FINITURE METALLI



**C**  
 Chromed / Cromato



**S**  
 Satin / Satinato



**B**  
 White / Bianco



**N**  
 Black / Nero



**D**  
 Gold / Oro



**98**  
 Pale blue / Avio



**16**  
 Indigo / Indaco



**35**  
 Lime / Lime



**02**  
 Yellow / Giallo



**06**  
 Red / Rosso



**12**  
 Brick / Mattone



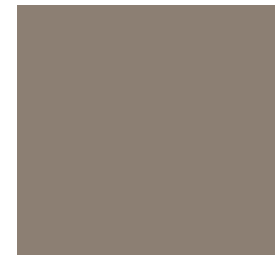
**22**  
 Bordeaux / Bordeaux



**54**  
 Sand / Sabbia



**18**  
 Dusty Rose / Polvere Rosa



**55**  
 Mineral Gray / Grigio Minerale

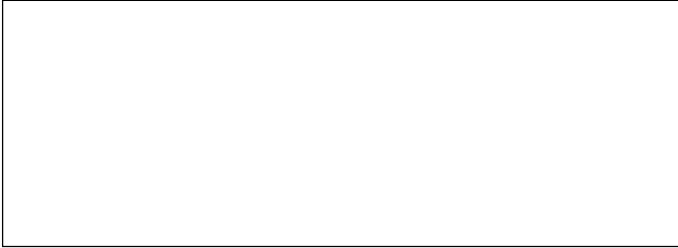


**14**  
 Pearl Grey / Grigio Perla



**21**  
 Grey / Grigio Antracite

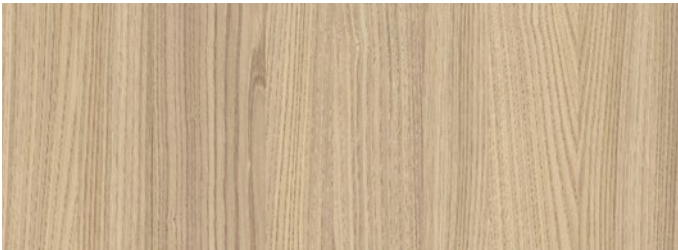
**BASES AND FRAMES WOODEN FINISHES / FINITURE LEGNO BASI E TELAI**



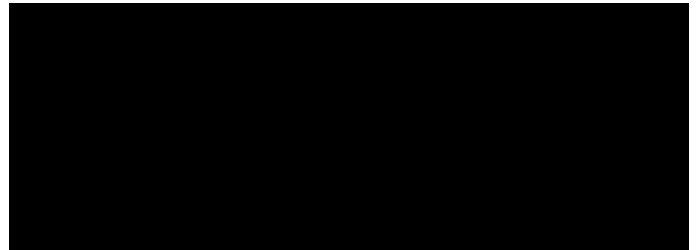
**00** White stained / Bianco



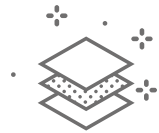
**F** Natural Beech / Faggio naturale



**RN** Natural Oak / Rovere Naturale

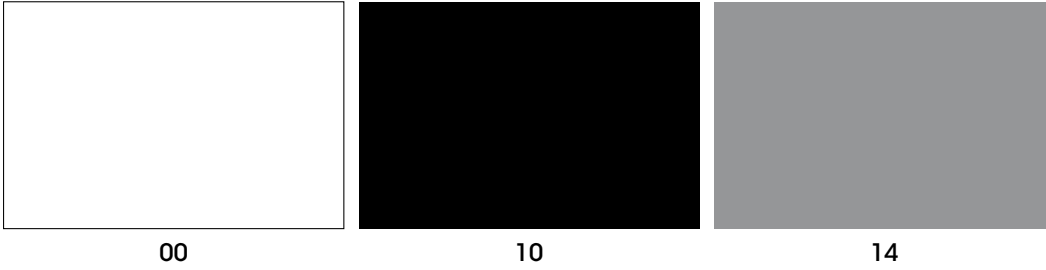


**10** Black stained / Nero

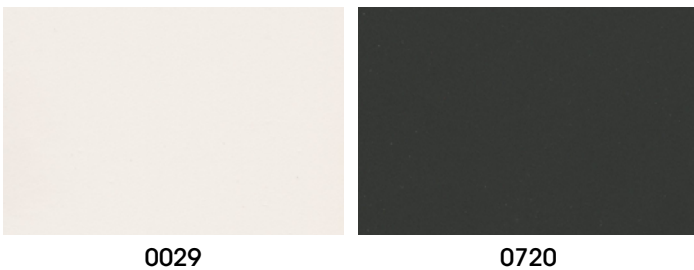


F-00-10 finishes arise from Beech Essence. RN finish come from Oak Essence.  
Le finiture F-00-10 derivano da essenza di Faggio. La finitura RN deriva da essenza di Rovere.

STANDARD COMPACTOP SURFACE



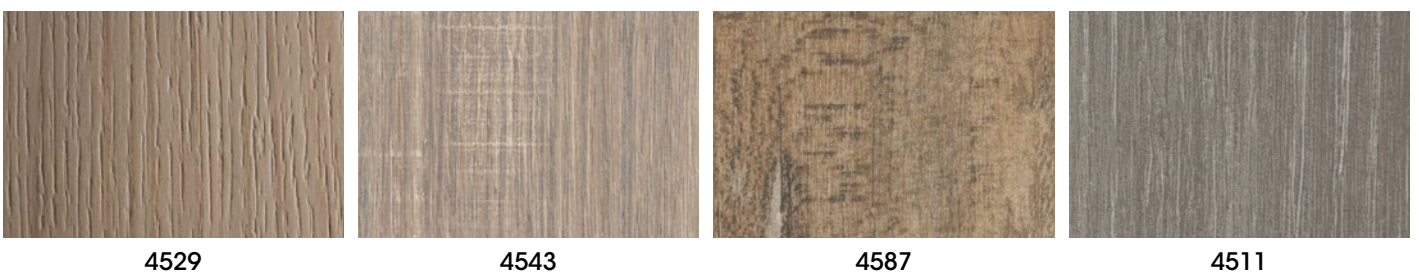
SPECIAL COMPACTOP SURFACE FENIX - [www.fenixforinteriors.com](http://www.fenixforinteriors.com)



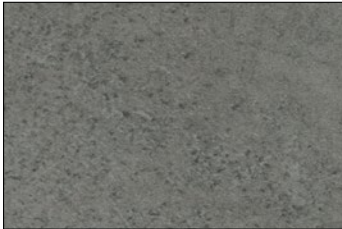
SPECIAL COMPACTOP SURFACE - SOLID - [www.arpaindustriale.com](http://www.arpaindustriale.com)



SPECIAL COMPACTOP SURFACE - WOOD EFFECT - [www.arpaindustriale.com](http://www.arpaindustriale.com)



SPECIAL COMPACTOP SURFACE - STONE, CONCRETE AND MARBLE EFFECT - [www.arpaindustriale.com](http://www.arpaindustriale.com)



3192



3349



3276



3329

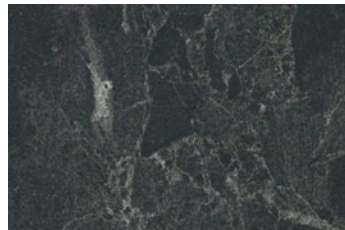


5547

SPECIAL COMPACTOP SURFACE - MARBLE EFFECT - [www.lamicolor.it](http://www.lamicolor.it)



6075



6076



6089

STANDARD LAMINATED SURFACE



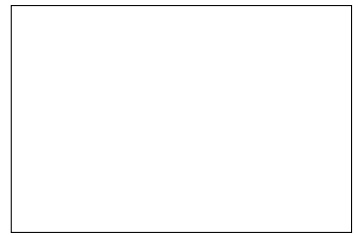
F



RN



W



00



10

SPECIAL LAMINATED SURFACE - WOOD EFFECT



B01



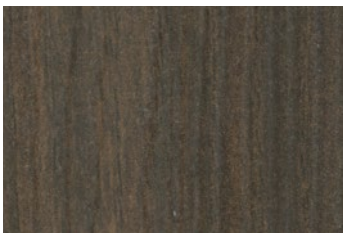
X41



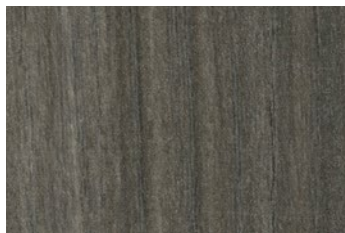
61M



V32

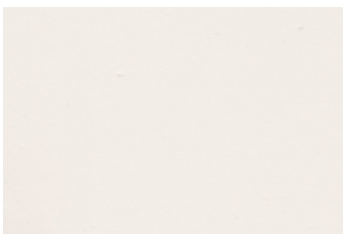


WG8

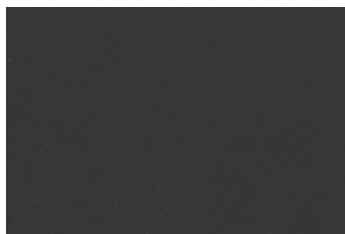


WG9

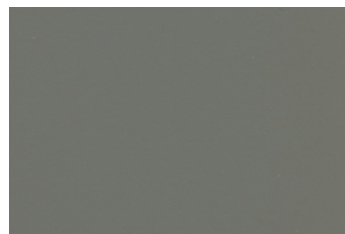
SPECIAL LAMINATED SURFACE - FENIX - [www.fenixforinteriors.com](http://www.fenixforinteriors.com)



0029



720



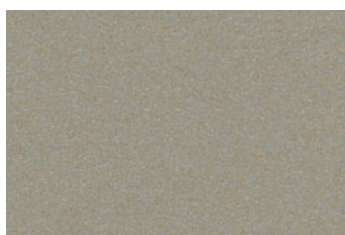
718



2630



2629



2628

**MARBLE SURFACE**



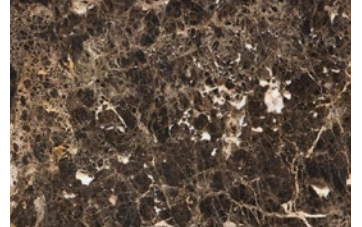
**MBC** - BIANCO CARRARA



**MNM** - NERO MARQUINA



**MVG** - VERDE GUATEMALA



**MED** - EMPERADOR DARK

**PORCELAIN SURFACE**



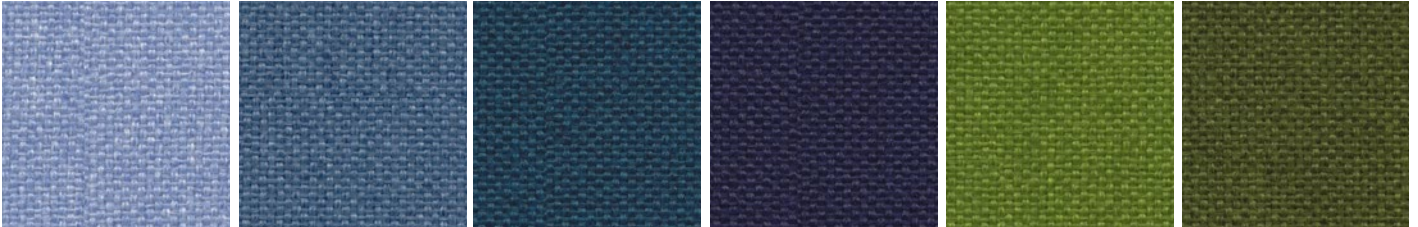
**PCO** - CALACATTA ORO



**PNG** - NERO GRECO



**K - KING FABRIC / TESSUTO KING**



6001

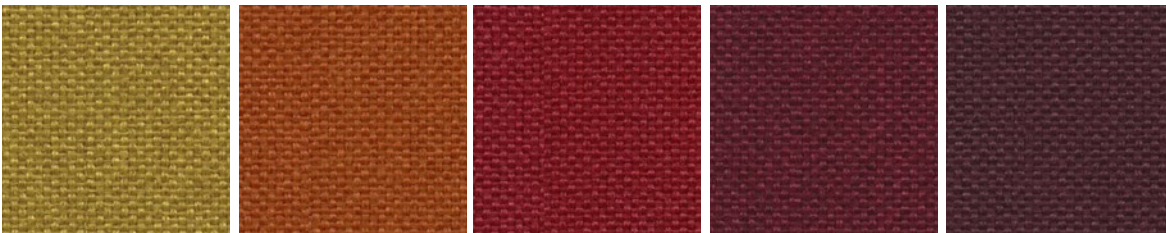
6091

6034

6052

7019

7022



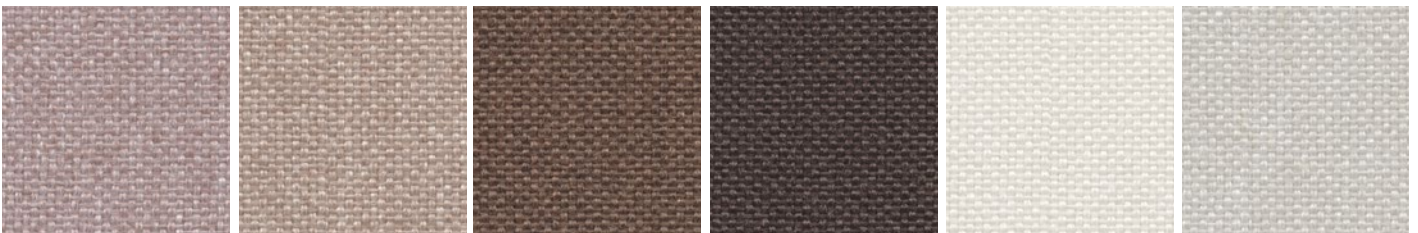
3030

3082

4021

4032

5001



1033

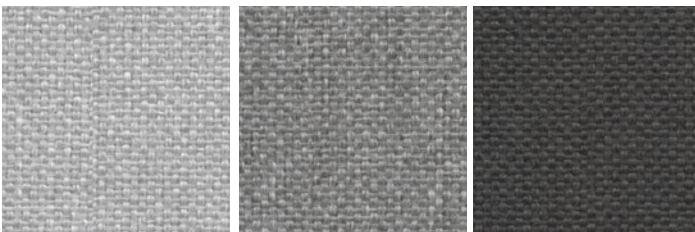
1008

2003

2007

1012

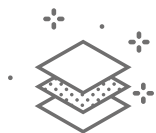
1025



8032

8006

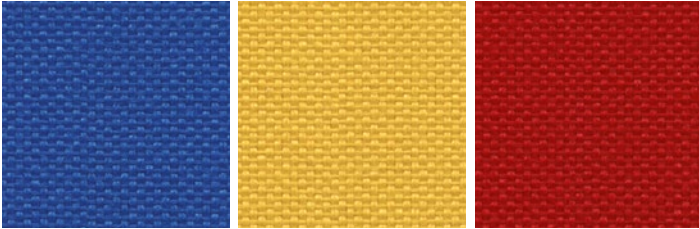
8011



- Composition: 100% POLYESTER - TREVIRA CS
- Abrasion: UNI EN ISO 12947-2 80.000 Cycle Martindale  $\pm 10\%$
- Light Resistance-Xenotest: UNI EN ISO 105-B02 / 6 (tol from 5 to 8)
- Fire proof: UNI 9174 - 8456 Class C1, UNI 9175 Class 1, DIN 4102 Class B1, NF 92501-7 Class M1, NF D 60013, 11M (UNI 9175), Class AM18, EN 1021-1 & 2, BS Crib 5, BS 7176, Class Medium Hazard, EN 13773 Class 1, OENORM 3800-1 Class B1, Q1, TR1, California TB117, USA NFPA 701, USA NFPA 260, IMO A 652 (16) Part 8 Upholstery.
- Maintenance: Standard 60° C cotton cycle.

Visit [www.fidivi.com](http://www.fidivi.com) for complete colours range / Visionate la completa gamma colori su [www.fidivi.com](http://www.fidivi.com)

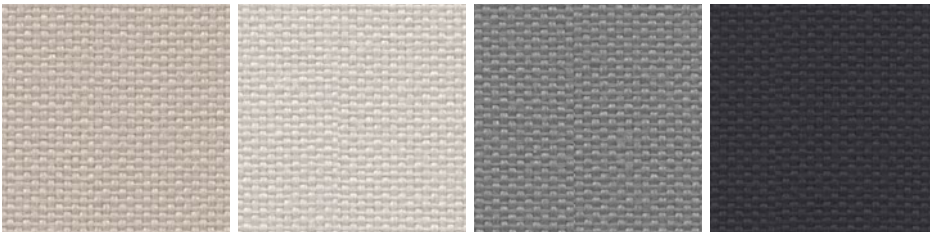
**L - KING L FABRIC / TESSUTO KING L**



**6071**

**3090**

**4027**

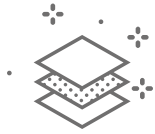


**1010**

**1025**

**8014**

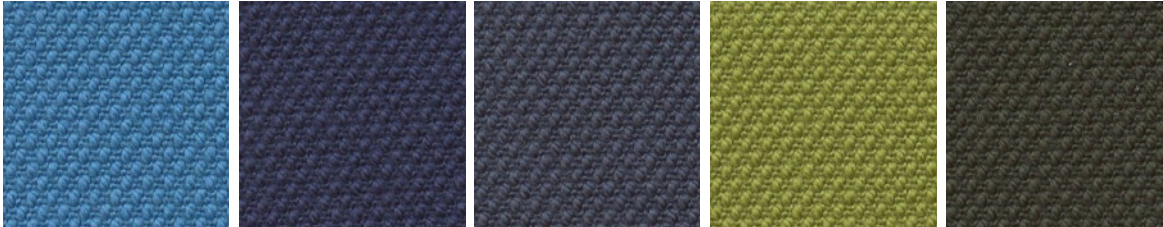
**8010**



- Composition: 100% POLYESTER
- Abrasion: UNI EN ISO 12947/2 70.000 Cycle Martindale  $\pm 10\%$
- Light Resistance-Xenotest: UNI EN ISO 105-B02 / 6 (tol from 5 to 8)
- Fire proof: UNI 9174 - 8456 Class C1, DIN 4102 Class B1, NF P 92501-7 Class M1, IMO Res. A652 (16), NF D 60013 Class AM18, EN 1021-1 & 2, BS 5852 part II Crib 5, BS 7176 Medium Hazard, ONORM B 3825-Onorm A 3800-1 Class B1-Q1-TR1, Euroclass EN 13501-1, EN 1021-1 & 2, IIM (UNI 9175), California TB 117.
- Maintenance: Use vacuum-cleaner, don't brush.

Visit [www.fidivi.com](http://www.fidivi.com) for complete colours range / Visionate la completa gamma colori su [www.fidivi.com](http://www.fidivi.com)

**DK - KVADRAT FABRIC (STEELCUT2) / TESSUTO KVADRAT (STEELCUT2)**



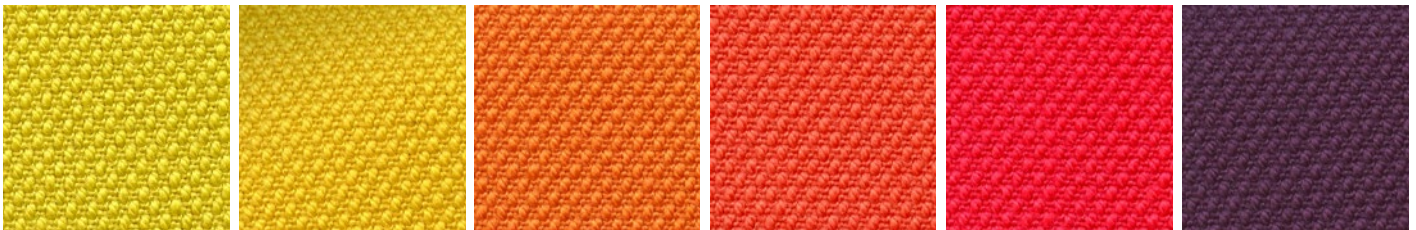
835

760

780

950

975



435

445

535

550

635

625



685

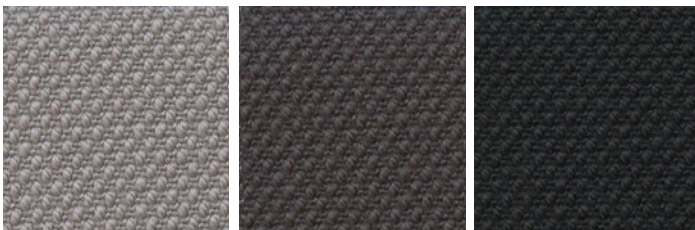
255

365

655

110

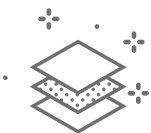
140



155

180

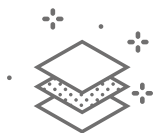
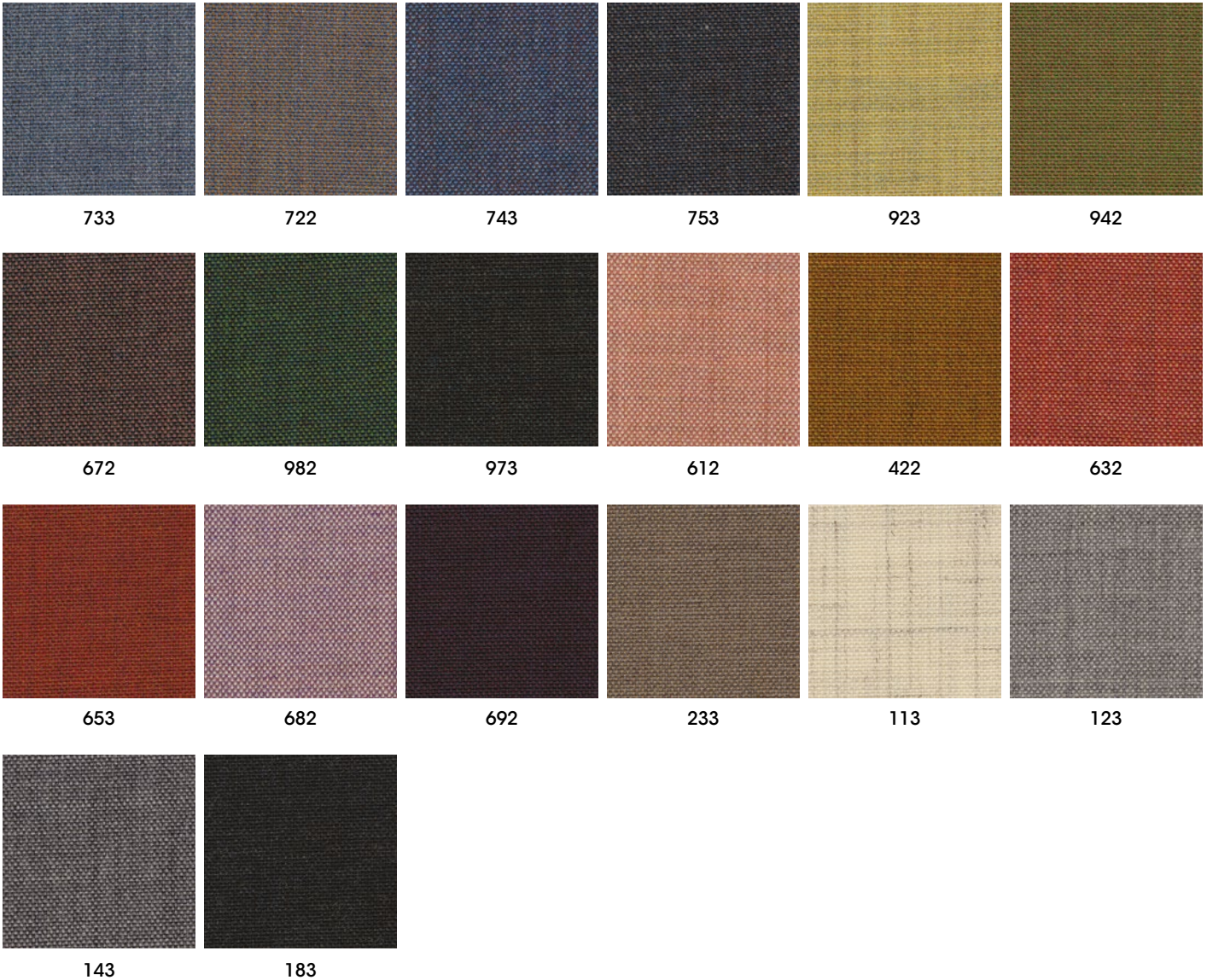
190



- Composition: 90% New wool worsted - 10% Nylon
- Abrasion: 100.000 Martindale rubs, EN ISO 12947
- Lightfastness: Note 5-7, ISO 105-B02
- AS/NZS 1530.3, BS 5852 crib 5 with treatment, BS 5852 part 1, IMO FTP Code 2010 Part 8, NF D 60 013, NFPA 260, SN 198 898 5.3 with treatment, UNI 9175 11M, US Cal. Bull. 117-2013, EN 1021-1/2, AS/NZS 3837 class 2, ÖNORM B1/Q1, ASTM E84 Class A Unadhered, ASTM E84 Class B Adhered.

Visit [www.kvadrat.dk](http://www.kvadrat.dk) for complete colours range / Visionate la completa gamma colori su [www.kvadrat.dk](http://www.kvadrat.dk)

**DK - KVADRAT FABRIC (REMIX3) / TESSUTO KVADRAT (REMIX3)**



- Composition: 90% wool, 10% nylon
- Abrasion: Approximately 100.000 Martindale rubs, EN ISO 12947
- Lightfastness: Note 5-7, ISO 105-B02
- AS/NZS 1530.3, BS 5852 crib 5 with treatment, BS 5852 ignition source 3, BS 5852 part 1, IMO FTP Code 2010 Part 7 with treatment, IMO FTP Code 2010 Part 8, NF D 60 013, NFPA 260, SN 198 898 5.3 with treatment, UNI 9175 1IM, US Cal. Bull. 117-2013, EN 1021-1/2, AS/NZS 3837 class 2, ÖNORM B1/Q1, ASTM E84 Class A Unadhered, ASTM E84 Class A Adhered, GB 50222 B1 with treatment.

Visit [www.kvadrat.dk](http://www.kvadrat.dk) for complete colours range / Visionate la completa gamma colori su [www.kvadrat.dk](http://www.kvadrat.dk)

**S - SUPERB TREVIRA VELVET FABRIC / TESSUTO SUPERB TREVIRA VELLUTO**



5130

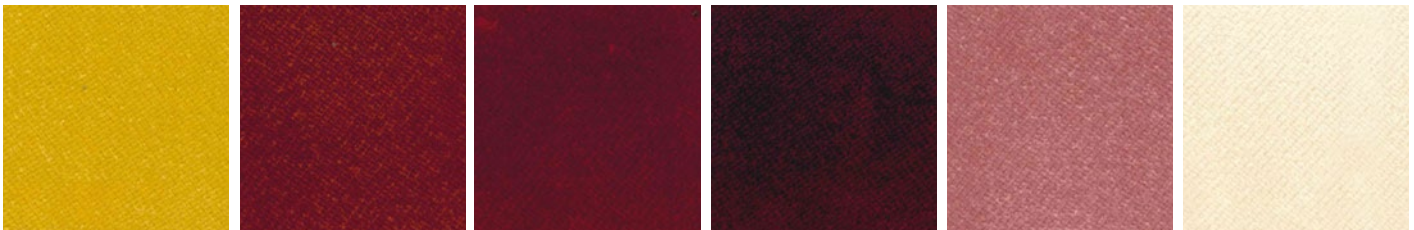
5127

5131

5140

5134

5135



5106

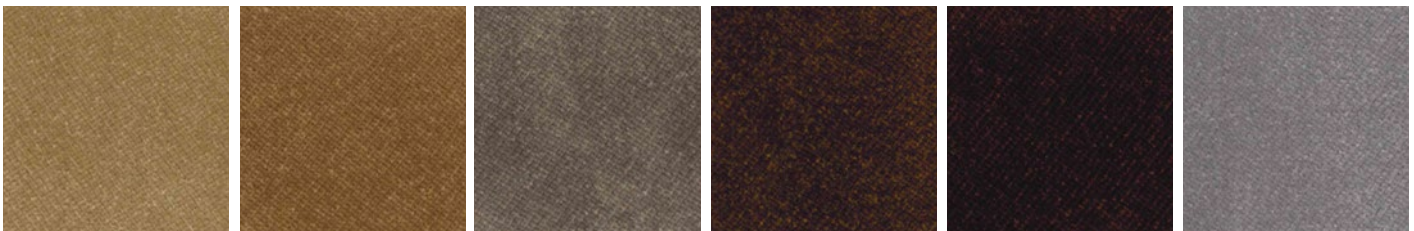
5112

5118

5119

5114

5103



5144

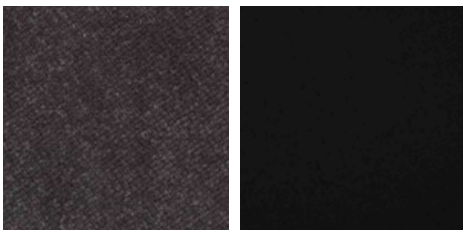
5143

5149

5142

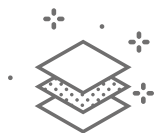
5145

5152



5151

5147



- Composition: 100% POLYESTER - TREVIRA CS
- Abrasion: UNI EN ISO 12947-2 100.000 Cycles
- Light Resistance-Xenotest: UNI EN ISO 105-B02 ≥5 Blue Scale
- Fire proof: UNI 8456 – 9174 classe 1, UNI 9175 classe 1IM ,EN 1021-1, EN 1021-2, BS 5852 crib 5, DIN 4102 B1, NF P 92 503-507 M1, TB 117:2013, UNI EN 13773:2004 classe 1, NFPA 701:2015.
- Maintenance: Dust gently or pass the surface with a damp cloth.

Visit [www.flukso.it](http://www.flukso.it) for complete colours range / Visionate la completa gamma colori su [www.flukso.it](http://www.flukso.it)

**B - BLAZER FABRIC / TESSUTO BLAZER**



**CUZ2Z**

**CUZ1E**

**CUZ86**

**CUZ47**

**CUZ1T**

**CUZ2R**



**CUZ3D**

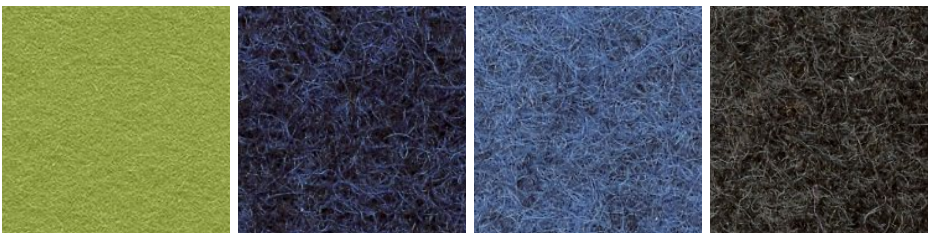
**CUZ18**

**CUZ63**

**CUZ82**

**CUZ1N**

**CUZ1K**

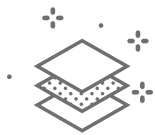


**CUZ2X**

**CUZ62**

**CUZ1W**

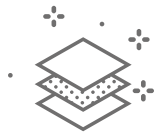
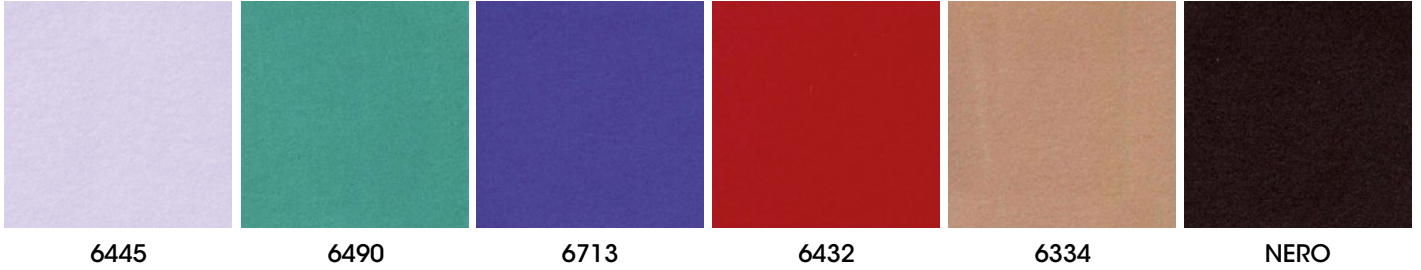
**CUZ67**



- Composition: 100% VIRGIN WOOL
- Abrasion: BS EN ISO 12497-2 65.000 Cycle Martindale
- Light Resistance-Xenotest: UNI EN ISO 105-B02 / 5
- Fire proof: BS EN 1021 Part 1, BS EN 1021 Part 2, BS 7176 Low Hazard, BS EN 13501-1:2007 Class D, NF D 60-013 AM18, UNI 9175:2010 Class 1IM, BS476 part 7 Class 1, ONORM B 3825, IMOFTP Code (part 8)
- Maintenance: Use the vacuum-cleaner.

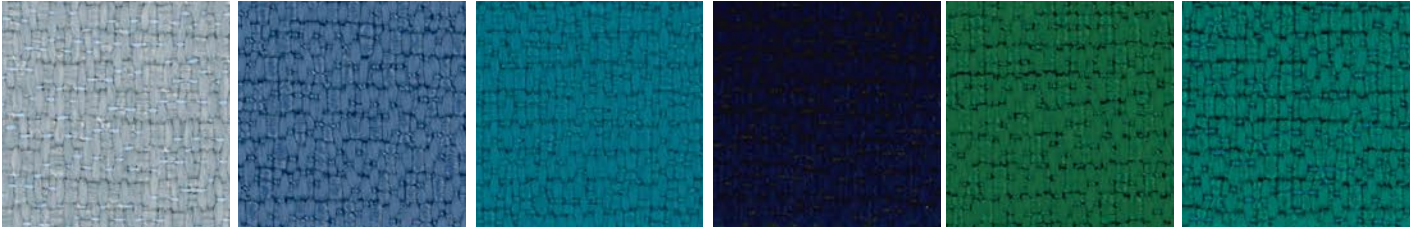
Visit [www.camirafabrics.com](http://www.camirafabrics.com) for complete colours range / Visionate la completa gamma colori su [www.camirafabrics.com](http://www.camirafabrics.com)

M - MIKI FABRIC / TESSUTO MIKI



- Composition: Composizione 100% PL 65/75 g/m<sup>2</sup> – Composition 100% PL 65/75 g/m<sup>2</sup>
- Light Resistance-Xenotest: UNI EN ISO 105-B02 / 01
- Maintenance: Dust with a soft and dry cloth.

FO - FORTEZZA 93 FABRIC / TESSUTO FORTEZZA 93



30-1

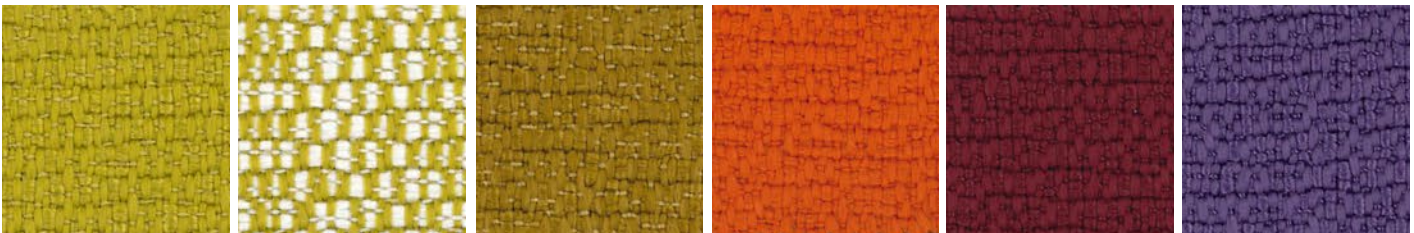
67-1

44-1

46-1

65-1

56-1



43-1

43-2

48-1

47-1

69-1

68-1



23-1

66-1

24-1

41-1

64-1

42-1



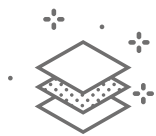
38-1

39-2

39-1

17-1

17-2



- Composition: 100% Polyolefinic
- Abrasion: UNI EN ISO 12947 35.000 rubs/cicli
- Seam slippage: BS 2543 - Pilling: UNI EN ISO 12945-2
- Colour fastness Dry Rubbing: UNI EN ISO 105-X12 - Colour fastness Wet Rubbing: UNI EN ISO 105-X12
- Light Fastness: UNI EN ISO 105-B02, UNI EN ISO 105-B04
- Colour Fastness to Sea Water: UNI EN ISO 105:E02:1996
- Colour Fastness to Chlorinated Water: UNI EN ISO 105:E03:2010
- Flammability: UNI 8456 - 9174 - CLASS 1 - ITALIAN FIRE SAFETY CLASSIFICATION - PASS, BS EN 1021.1:1994 - SOURCE 0 - CIGARETTE TEST - PASS, BS EN 1021.2:1994 - SOURCE 1 - BUTANE FLAME - PASS ON FR FOAM, T.B. 117 (2013): SECTION 1 POSITIVE, B1 ACCORDING TO DIN 4102, PART 1 (MAY 1998), NFPA 260:2013 - CLASS 1, IMO 2010 FTP CODE PART 8 - Resolution MSC 307(88) - Cigarette and Match Test, EN 13773 (2004) CLASS 1.

Visit [www.primafabrics.it](http://www.primafabrics.it) for complete colours range / Visionate la completa gamma colori su [www.primafabrics.it](http://www.primafabrics.it)



GR - PROGARDEN FABRIC / TESSUTO PROGARDEN



**051**  
MEDITERRANEAN BLUE

**026**  
PISTACHIO

**028**  
OLIVE GREEN

**012**  
LINEN

**683**  
SLATE



- Composition: 100% yarn dyed acrylic
- Martindale (ISO 12947-2): 15.000 cycles
- Dimensional change after washing at 40°C and drying (warp/weft) (ISO 5077): ± 2%/0%
- Breaking strength (warp/weft) (ISO 13934-1): 200/70 daN - Elongation at break (warp/weft) (ISO 13934-1): 25%/25% - Tear strength (warp/weft) (ISO 13937-1): 7/3,7 daN
- Resistance to seam (warp/weft) (ISO 13935-1): 50/50 daN - Air permeability (ISO 9237): 65 l/m<sup>2</sup>/s
- Finishing: Water repellent Teflon/Scotchgard treatment, dirt repellent and anti-mould treatment
- Spray Test (ISO 4920): 4 out of 5 - UV Colour fastness (ISO 105 B02): 5/8 out of 8
- Colour fastness to weather (ISO 105 B04): 5/8 out of 8 - Colour fastness after washing at 40°C (ISO 105 C06): 5 out of 5

Visit [www.giovanardi.com](http://www.giovanardi.com) for complete colours range / Visionate la completa gamma colori su [www.giovanardi.com](http://www.giovanardi.com)

SX - SILVERTEX FABRIC / TESSUTO SILVERTEX



**3066**  
BALTIC

**5020**  
BASIL

**1014**  
UMBER

**0002**  
SANDSTONE

**4004**  
ICE

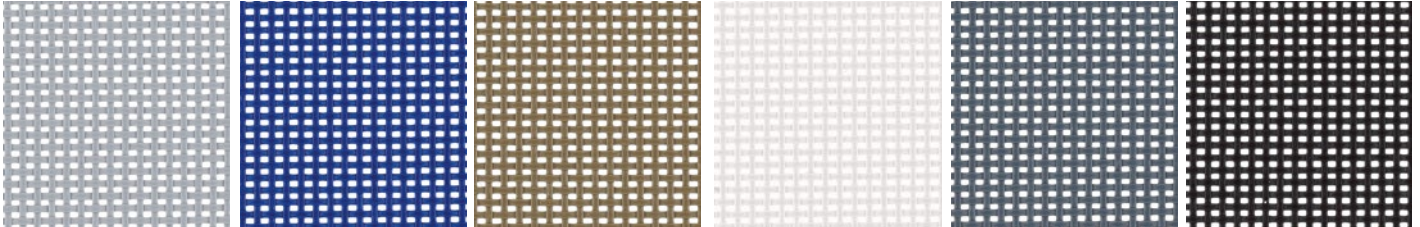
**4003**  
GRAPHITE



- Composition: 100% Vinyl / Polyester Backing
- Abrasion: >300.000 cycles Martindale (EN ISO 12947:1999 Part 2)
- UV Resistance: ISO 105 B04 ≥ 4/5 (Grey Scale), ISO 105 B02 ≥ 7/8 (Blue Wool Scale)
- Flame Retardancy: EU: EN 1021 Part 1 & 2 DE: DIN 4102 B2 ECE Regulation No.118:03 (R118.02 Annexes 6, 7 & 8), ES: UNE 23.727-90 1R/M.2, FR: NF P 92-503/M2, IT: UNI 9175 (1987) / UNI 9175/FA1 (1994) Classe 1.IM (UNO IEMME), AT: ÖNORM B 3825, Gruppe 1 - Schwerbrennbares Verhalten, AT: ÖNORM A 3800 Teil 1, Qualmbildungsklasse Q1 - schwachqualmend, IMO FTP 2010 Code MSC.307 (88) Part 8 3.1 & 3.2, (MED) Marine Equipment Directive (in its current valid version), EN 71-2:2006+A1:2007 - Safety of Toys - Parte 2: Flammability, US: CAL TB 117-2013, Section E, FMVSS 302, FAR 25/853

Visit [www.spradling.eu](http://www.spradling.eu) for complete colours range / Visionate la completa gamma colori su [www.spradling.eu](http://www.spradling.eu)

**R - MESH FABRIC / TESSUTO RETE**



R08

R10

R09

R01

R03

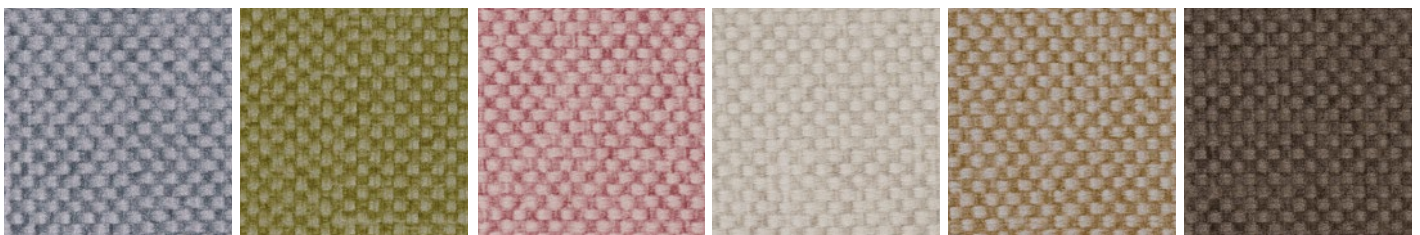
R02



- Composition: Polyvinyl 70% - Polyester 30%
- Warp Tensile Strength: 310Kg/5cm
- Weft Tensile Strength: 270Kg/5cm
- Fire retardant on request

Visit [www.plastitex.com](http://www.plastitex.com) for complete colours range / Visionate la completa gamma colori su [www.plastitex.com](http://www.plastitex.com)

**MG - MAGLIA VINYL FABRIC / TESSUTO MAGLIA VINILE**



0003

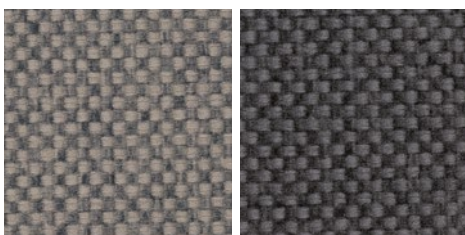
0406

4203

5001

6025

4537



1702

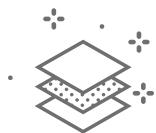
6016



- Composition: Vynil 100%
- Abrasion: >100.000 cycles Martindale (EN ISO 12947:1999 Part 2)
- Fire Proof: EN 1021 Part 1 & 2, UNE 23.727-90 1R/M.2, NF P 92-503/M2, DIN 4102 B2, UNI 9175 (1987) / UNI 9175/FA1 (1994) Classe 1.IM (UNO I EMME), ÖNORM B 3825, Gruppe 1 - Schwerbrennbares Verhalten, ÖNORM A 3800 Teil 1, Qualmbildungsklasse Q1 - schwachqualmend, IMO FTP 2010 Code MSC.307 (88) Part 8 3.1 & 3.2, FMVSS 302, US: FAR 25/853, (MED) Marine Equipment Directive (in its current valid version), ECE R118.02 (replaces Directive 95/28/CE) Annexes 6, 7 & 8, EN 71-2:2006+A1:2007 - Safety of Toys - Parte 2: Flammability, CAL TB 117-2013, Section E
- Light Resistance: UV-Resistance XENOTEST DIN 54004/ NTC 1479

Visit [www.spradling.eu](http://www.spradling.eu) for complete colours range / Visionate la completa gamma colori su [www.spradling.eu](http://www.spradling.eu)

E - SIMIL LEATHER AUREA / ECOPELLE AUREA



- Composition: 72% PVC - 3% PU - 25% COTTON
- Abrasion: EN ISO 5470-2 100.000 Cycle Martindale
- Light Resistance-Xenotest: UNI EN ISO 105-B02 / 6
- Fire proof: UNI 9175 classe 1IM, EN 1021-1, EN 1021-2, BS 5852-1 cigarette test, BS 5852-1 match test BS 5852 crib 5, TB 117:2013, IMO res. A.652(16)
- Maintenance: Dust gently or pass the surface with a damp cloth.

Visit [www.flukso.it](http://www.flukso.it) for complete colours range / Visionate la completa gamma colori su [www.flukso.it](http://www.flukso.it)

**C - LEATHER / CUOIO**



106

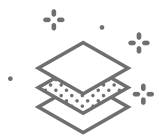
102

111

108

101

109



- Composition: 100% Grain Leather, Italian tannery
- Light Resistance: IUF/101
- Fire proof: CAL TB 117-00, Section E -part 1; BS 5852/90 section 4 (CRIB 5); UNI 91/75 Classe 2IM
- Maintenance: Dust gently or pass the surface with a damp cloth.

**P - LEATHER / PELLE**



106P

102P

111P

110P

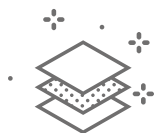
108P



101P

112P

109P



- Composition: 100% Top Grain Leather, Italian tannery
- Light Resistance-Xenotest: UNI EN ISO 105-B02 / 6
- Fire proof: BS EN 1021 Part 1, BS 1021 Part 2, BS 5852 Part 2 (with special fire-retardant padding)
- Maintenance: Dust with a soft and dry cloth.



#### **GABER LITERATURE**

All Gaber literature contains technical information and use-suggestions for those who intend to purchase or already have bought items from the Gaber range. For Customers' interest, the Company may modify its products without any prior notice. Drawings, quoted materials and catalogue colors and price-lists are shown as a guide only and subject to tolerances. Dimensions are provided also in inches (\*) has a guide only. The colors displayed in Gaber literature, related to technopolymer finishing and coverings, fabrics, leather, lacquered or painted materials, wooden items, may change from time to time. Gaber reserves the right to suspend the production of any of its products without any notice or reason. All rights of reproduction in whole or in part of Gaber literature, related to text, images or illustration, or transmitted by any means, electronic or mechanical, including photocopying, recording or any information storage without written permission from Gaber, are reserved worldwide.



#### **DOCUMENTAZIONE GABER**

La documentazione Gaber contiene informazioni tecniche e consigli d'uso per chi vuole acquistare o possiede articoli facenti parte della gamma prodotti Gaber. Nell'interesse della clientela, Gaber si riserva il diritto di modificare i propri modelli in ogni momento, senza obbligo di preavviso. I disegni, le quote, i materiali ed i colori dei cataloghi e del listino Gaber si intendono a titolo puramente indicativo, e soggetti a tolleranze. Le dimensioni in pollici (\*) sono da considerarsi indicative. I toni di colore rappresentati o presenti nelle palette colori e rivestimenti, relativi ai tessuti, alla pelle, alle laccature, ai vetri, e alle essenze legno, sono indicativi, in quanto passibili di variazioni da partita a partita. Gaber declina ogni responsabilità in relazione a leggere differenze di tonalità. Gaber si riserva inoltre il diritto di ritirare, sospendere o cessare la produzione di ogni singolo suo prodotto in qualsiasi momento e a sua discrezione senza darne preventivo avviso. Tutti i diritti di riproduzione, anche parziale, di cataloghi e listini Gaber relativi a testi, immagini, illustrazioni, disegni, sia con mezzi meccanici che elettronici, incluso fotocopie o la formazione di sorgenti di informazione, senza il preventivo permesso scritto di Gaber, sono globalmente riservati.



#### **DOCUMENTACION GABER**

Toda la documentación Gaber contiene una serie de informaciones técnicas y consejos para el utilize para quién quiera comprar o para quién posea productos pertenencias a la gama Gaber. En el interés de los clientes, Gaber se reserva el derecho de poder modificar o mejorar sus productos sin avisar antes. Los dibujos, las medidas, los materiales y los colores se ilustran exclusivamente a modo de ejemplo y son indicativas, sujetos a tolerancias. Las tonalidad de los colores del muestrario relativas a las telas, pieles, pintura, esencias de las maderas, pueden variar según partida. Gaber declina todo tipo de responsabilidades con relación a pequeñas diferencias de color. Gaber se reserva además el derecho de retirar, suspender o cesar la producción de cualquier producto en cualquier momento y a propia discreción sin dar previo aviso. Todos los derechos de reproducción, incluso parcial, de los catálogos y listas de precios Gaber relativos a los textos, imágenes, ilustraciones, diseños ya sea por medios mecánicos o electrónicos, incluyendo el fotocopiado o la formación de fuentes de información, sin el permiso previo por escrito de Gaber, son reservados a nivel mundial.



#### **DOCUMENTATION GABER**

Notre documentation contient des informations techniques et des conseils pour l'utilisation des produits, pour les futurs clients Gaber ou pour qui est déjà en possession d'un produit Gaber. Dans l'intérêt de la clientèle, Gaber se réserve le droit de modifier ses modèles, à n'importe quel moment, sans aucun préavis. Les dessins, les descriptions, les cotes, les matériaux et les couleurs du catalogue et du tarif sont purement indicatifset sous réserve des tolérances. Les dimensions en pouce sont indicatives. Les tonalités des couleurs qui sont représentées sur la carte couleur, relatives aux tissus, au cuir, aux polipro, aux essences de bois sont purement indicatives car elles peuvent varier d'un lot à un autre. Gaber décline toute responsabilité en ce qui concerne toute différence de tonalité.

Gaber se réserve le droit de retirer, de suspendre ou de cesser la production de tout article, sans aucun préavis. Tout droit de reproduction, même partielle, des catalogue, relatif aux textes, images, illustrations, dessins, par des moyens mécaniques, électroniques, par photocopie, ou autre source d'information, sans le consentement préalable de Gaber, est réservé.



#### **GABER DOKUMENTATION**

Die Dokumentation von Gaber beinhaltet technische Informationen und Ratschläge zur Nutzung von Gaber Produkte für Kaufinteressenten bzw. für Besitzer von Artikeln, die zur Produktpalette der Gaber angehören. Im Interesse der Kunden behält sich Gaber das Recht vor die eigenen Modelle jederzeit abzuändern, ohne Pflicht zur Vorankündigung. Die Zeichnungen, die Quoten, die Materialien und die Farben der Kataloge und der Preislisten der Gaber dienen lediglich als Information und unterliegen Toleranzen. Die Maßen, die in Zoll angegeben sind, sind als Richtwerte zu betrachten. Die dargestellten Farbtöne, auch die in den Farbpaletten, sowie die Stoff-, Leder-, Lack-, Glas- und Holzverkleidungen sind Indikativ, da von Fall zu Fall Änderungen möglich sind. Gaber lehnt jegliche Verantwortung in Verbindung mit Farbtonabweichungen ab. Gaber behält sich zudem das Recht vor die Produktion jedes einzelnes Produkts zurückzuziehen, einzustellen bzw. abzutreten. Die Rechte an der Reproduktion von Kataloge und Preislisten der Gaber in Bezug auf Texte, Bilder, Illustrationen, Zeichnungen, die sowohl mit mechanischen als auch mit elektronischen Mitteln, Kopien inbegriffen, erfolgen sind weltweit der Gaber vorbehalten und benötigen eine schriftliche Genehmigung der Gaber.

 design Nation

**Gaber**<sup>®</sup>

[gaber.it](http://gaber.it)