

BILLIANI

---

FABRICS + FINISHES

# TIMBER FINISHES

---

# TIMBER FINISHES

---



Bleached FG 0078



Natural FG 0003



Fango FG 0027



Walnut FG 0012



Wenge FG 0025



Bleached FR 0065



Natural FR 0076



Fango FR 0028



Tobacco FR 0035



Wenge FR 0047



Walnut



Bleached RO 0034



Natural RO 0046



Fango RO 0028



Tobacco RO 0035



Wenge RO 0047



Light ivory RAL 1015



Maize yellow RAL 1006



Curry RAL 1027



Sage NCS S 2010-G10Y

# TIMBER FINISHES

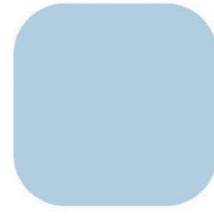
---



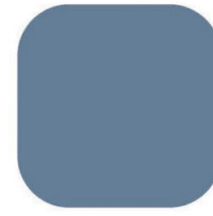
Reseda green RAL 6011



Chrome green RAL 6020



Blue pepper NCS S 1020-R90B



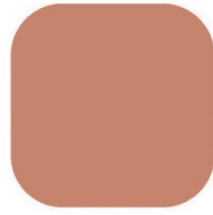
Pigeon blue RAL 5014



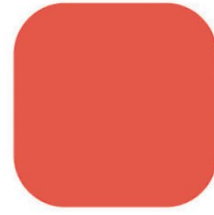
Billiani blue NCS S 7020-R80B



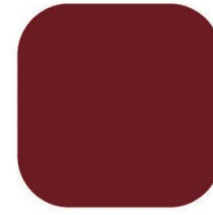
Pale pink NCS S 1015-Y80R



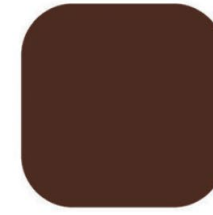
Beige red RAL 3012



Coral NCS S 1070-Y80R



Purple red RAL 3004



Mahogany brown RAL 8016



Cement grey RAL 7033



Silk grey RAL 7044



Anthracite grey RAL 7016



Traffic black RAL 9017



Light ivory RAL 1015



Maize yellow RAL 1006



Curry RAL 1027



Sage NCS S 2010-G10Y



Reseda green RAL 6011



Chromo green RAL 6020

# TIMBER FINISHES

---



Blue pepper NCS S 1020 R90B



Pigeon blue RAL 5014



Billiani blue NCS S 7020 R80B



Pale pink NCS S 1015 Y80R



Beige red RAL 3012



Coral NCS S 1070 Y80R



Purple red RAL 3004



Mahogany brown RAL 8016



Cement grey RAL 7033



Silk grey RAL 7044



Anthracite grey RAL 7016



Traffic black RAL 9017

# FABRICS

---

FABRIC LUNA



0989



0660



0621



2377



1002



2376



2190



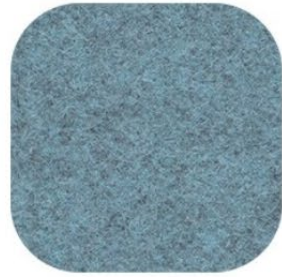
2378

# FABRIC FLAMENCO

---



0897



2379



0871



2380



1052



0898



1492



0929



# FABRIC KING L KAT

---



1810



1119



1091



1092



1838



1088



1093



2381

FABRIC LASER N



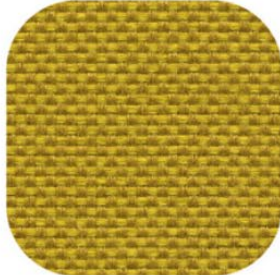
2382



2383



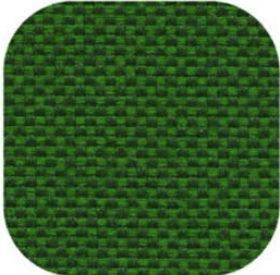
2384



2344



2385



2356



2386



2387

# FABRIC TWILLTENTY

---



2388



2392



2390



2275



2274



2391



2389



2393

## FABRIC CREDO

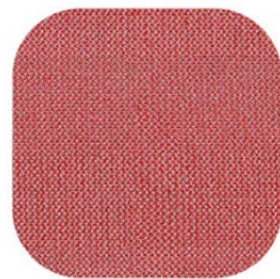
---



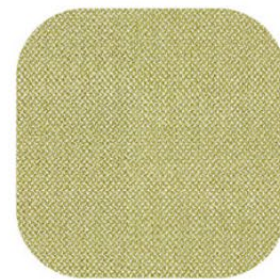
2394



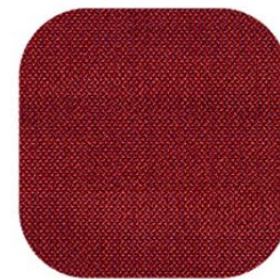
2284



2285



2282



2281



2283



2395



2396

FABRIC BOEMIAN



2400



2401



2402



2403



2404



2405



2406



2407

## FABRIC BRIONNE

---



2408



2409



2410



2411

## FABRIC LINARI

---



2412



2413



2414



2415

## FABRIC DIVINA 3

---



2294



2459



2458



2460



1454



1519



2481



2502

## FABRIC OMBRA

---



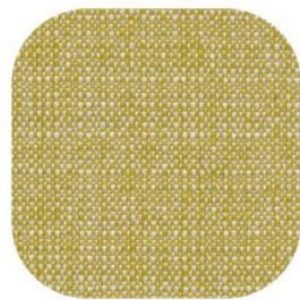
2467



2505



2461



2468



2466



2462



2504



2503



LEATHER

---

ECO-LEATHER

# LEATHER SOFT UNITO

---



2397



0953



2399



2398



0643



1181



0954



2439

# ECO LEATHER INCA

---



1507



1191



0928



2366



2367



1649



1878



0924

ECO LEATHER MAGNUM

---



2368



2369



2370



2371



2372



2373



2374



2375

STEEL

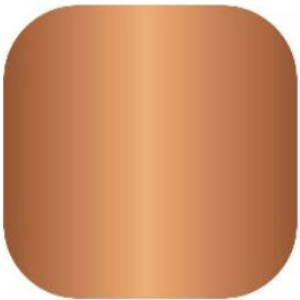
---

STEEL

---



Brass



Copper



Carbon



Chromed



White RAL 9016



Silk grey RAL 7044



Traffic black RAL 9017

TABLETOPS

---

TABLETOPS



Carrara



Marquina



Guatemala



Traffic black RAL 9017



White RAL 9016



Silk grey RAL 7044



Traffic black RAL 9017



White RAL 9016



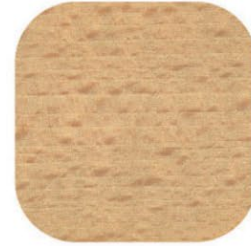
Traffic black RAL 9017



White RAL 9016



Bleached FG 0078



Natural FG 0003



Fango FG 0027



Walnut FG 0012



Wenge FG 0025



Walnut



Extra-clear



Smoked



SPECIAL

---

FULL GRAIN LEATHER

---



White



Dark brown



Black

STRAPS

---



Black 1701



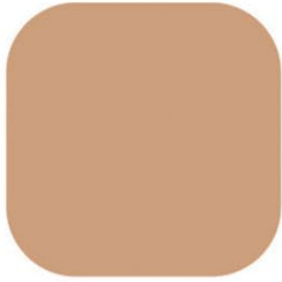
White 1702

HIDE

---



White 0537



Pink 2336



Orange 2334



Rust 2340



Dark brown 2335



Dark brown 1545



Black 0536

ROPE

---



White 001



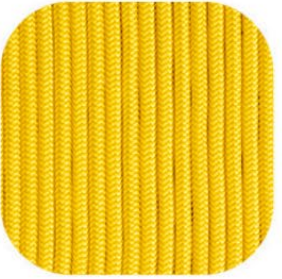
Black 006



Brown 003



Hemp 005



Yellow 002



Red 007

CELLULOSE ROPE

---



Anthracite 0529



Dark brown 0543



Hemp 0530

ROPE

---



White 001



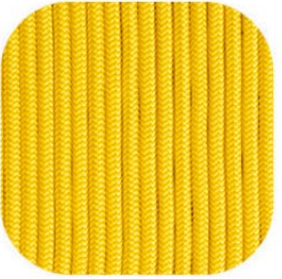
Black 006



Brown 003



Hemp 005



Yellow 002



Red 007

CELLULOSE ROPE

---



Anthracite 0529



Dark brown 0543



Hemp 0530

FELT



2506



2510



2508



2471



2470



2509



2507



2511

## LASER N

Cat. Essential

## TWILL-TWENTY

Cat. Tailored

## CREDO

Cat. Tailored

## BOEMIAN

Cat. Select

## BRIONNE

Cat. Tailored

## LINARI

Cat. Tailored

Norma/Norm  
ISO 12947-2

Dichiarato/Declared  
100.000 cicli/rubs

Norma/Norm  
ISO 12947-2

Dichiarato/Declared  
80.000 cicli/rubs

Norma/Norm  
ISO 12947-2

Dichiarato/Declared  
100.000 cicli/rubs

Norma/Norm  
ISO 12947-2

Dichiarato/Declared  
45.000 cicli/rubs

Norma/Norm  
ISO 12947-2

Dichiarato/Declared  
40.000 cicli/rubs

Norma/Norm  
ISO 12947-2

Dichiarato/Declared  
35.000 cicli/rubs

Norma/Norm  
ISO 105-X12

Dichiarato/Declared  
4/5 secco-umido  
/ dry-wet

Norma/Norm  
ISO 105-X12

Dichiarato/Declared  
4/5 secco-umido  
/ dry-wet

Norma/Norm  
ISO 105-X12

Dichiarato/Declared  
4/4 secco-umido  
/ dry-wet

Norma/Norm  
ISO 105-X12

Dichiarato/Declared  
4/5 secco/dry  
2/3 umido/wet

Norma/Norm  
ISO 105-X12

Dichiarato/Declared  
4/5 secco/dry  
2/3 umido/wet

Norma/Norm  
ISO 105-X12

Dichiarato/Declared  
4/5 secco/dry  
2/3 umido/wet

Norma/Norm  
ISO 12945-2

Dichiarato/Declared  
5

Norma/Norm  
ISO 12945-2

Dichiarato/Declared  
4-5

Norma/Norm  
ISO 12945-2

Dichiarato/Declared  
4-5

Norma/Norm  
ISO 12945-2

Dichiarato/Declared  
4

Norma/Norm  
ISO 12945-2

Dichiarato/Declared  
3-4

Norma/Norm  
ISO 12945-2

Dichiarato/Declared  
3-4

CRIB 5; C1; M1;  
B1; EN 1021/1-2;  
IMO FTP CODE  
307(88)/8;  
BS 7176 MEDIUM  
HAZARD;  
CLASSE AM 18  
NF D 60013

CLASSE 1; M1;  
B1; BS 5852  
SOURCE 0;  
BS 7176 MEDIUM  
HAZARD; BS 5867;  
IMO FTP CODE  
307(88)/8;  
CALIFORNIA TB 117

CLASSE 1 IM;  
CALIFORNIA TB 117;  
CRIB 5; BS 5852/1;  
B2; EN 1021/1-2;  
EN 13501-1; FAR  
25.853 (12 SEC.  
VERTICAL); BKZ: 5.3  
SN 198898; IMO:  
MED 2014/90/EU;  
NF-P92 503-507 M2

CIGARETTE BS 5852/1  
(1979) no FR foam;  
CIGARETTE BS 5852  
(2006) FR foam;  
MATCH BS 5852/1  
(1979) no FR foam;  
MATCH BS 5852  
(2006) FR foam;  
CALIFORNIA TB 117

CIGARETTE BS  
5852/1 (1979)  
no FR foam;  
CIGARETTE BS 5852  
(2006) FR foam;  
CALIFORNIA TB 117

CIGARETTE BS 5852  
(2006) FR foam;  
MATCH BS 5852/1  
(1979) no FR foam;  
MATCH BS 5852  
(2006) FR foam;  
CALIFORNIA TB 117

100%  
TREVIRA CS

100%  
PL FLAME  
RETARDANT

95% WV;  
5% PA

5% CO; 25% VI;  
13% LI; 15% WO;  
25% PL; 15% PC;  
2% PA

18% CO; 31% PL;  
26% WO; 22% PC;  
3% PA

50% CO; 17% LI;  
33% VI

## INCA

Cat. Essential

## MAGNUM

Cat. Select

## SOFT UNITO

Cat. Tailored

## LUNA

Cat. Select

## FLAMENCO

Cat. Select

## KING L KAT

Cat. Essential

Norma/Norm  
ISO 5470-2

Dichiarato/Declared  
100.000 cicli/rubs

Norma/Norm  
ISO 5470-2

Dichiarato/Declared  
200.000 cicli/rubs

Norma/Norm  
ISO 12947-2

Dichiarato/Declared  
190.000 cicli/rubs

Norma/Norm  
ISO 12947-2

Dichiarato/Declared  
60.000 cicli/rubs

Norma/Norm  
ISO 12947-2

Dichiarato/Declared  
80.000 cicli/rubs

Norma/Norm  
ISO 105-X12

Dichiarato/Declared  
4/4 secco-umido  
/ dry-wet

Norma/Norm  
ISO 105-X12

Dichiarato/Declared  
5/5 secco-umido  
/ dry-wet

Norma/Norm  
ISO 11640

Dichiarato/Declared  
4/4 secco-umido  
/ dry-wet

Norma/Norm  
ISO 105-X12

Dichiarato/Declared  
4/5 secco-umido  
/ dry-wet

Norma/Norm  
ISO 105-X12

Dichiarato/Declared  
4/5 secco-umido  
/ dry-wet

Norma/Norm  
ISO 105-X12

Dichiarato/Declared  
4/5 secco-umido  
/ dry-wet

Norma/Norm  
ISO 12945-2

Dichiarato/Declared  
5

Norma/Norm  
ISO 12945-2

Dichiarato/Declared  
4

Norma/Norm  
ISO 12945-2

Dichiarato/Declared  
5

CLASSE 1 IM;  
EN 1021/1-2;  
BS 5852/1;  
NF-P 92 503 - M2  
CALIFORNIA TB 117;  
IMO FTP CODE  
307(88)/8;  
ÖNORM B 3825

CLASSE 1 IM;  
EN 1021/1-2;  
BS 5852/1;  
CALIFORNIA TB 117;  
IMO FTP CODE  
307(88)/8;  
ÖNORM B 3825

ISO 1021/1

CLASSE 1;  
CLASSE 1 IM;  
CALIFORNIA TB 117;  
EN 1021/1-2;  
BS 5852/0-1;  
IMO FTP CODE  
307(88)/7-8; M1;  
B1; NFPA 260

CLASSE 1 IM;  
CRIB 5;  
EN 1021/1-2;  
BS 7176 MEDIUM  
HAZARD

CLASSE 1 IM  
CRIB 5; C1; M1; B1;  
EN 1021/1-2; BS 7176  
MEDIUM HAZARD;  
IMO FTP CODE  
307(88)/8;  
CLASSE AM 18  
NF D 60013;  
CALIFORNIA TB 117;  
ÖNORM B 3825

88% PVC;  
6% PL; 6% CO


88% PVC;  
7% PL; 4% CO;  
1% PU/PC


100%  
PELLE BOVINA  
/BOVINE LEATHER  
SPESSORE  
/THICKNESS  
0,9 - 1,1 mm

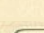
100%  
TREVIRA CS


100%  
LANA VERGINE  
PURE NEW WOOL

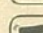
100%  
TREVIRA CS

 Reazione al fuoco / Flammability

 Resistenza all'abrasione (cicli) – Martindale  
Abrasion resistance (rubs) – Martindale

 Pilling / Pilling

 Composizione / Composition

 Solidità allo sfregamento (scala grigi)  
Fastness to rubbing (grey scale)

**INCA**  
*Essential*



1507

1191

0928

2366

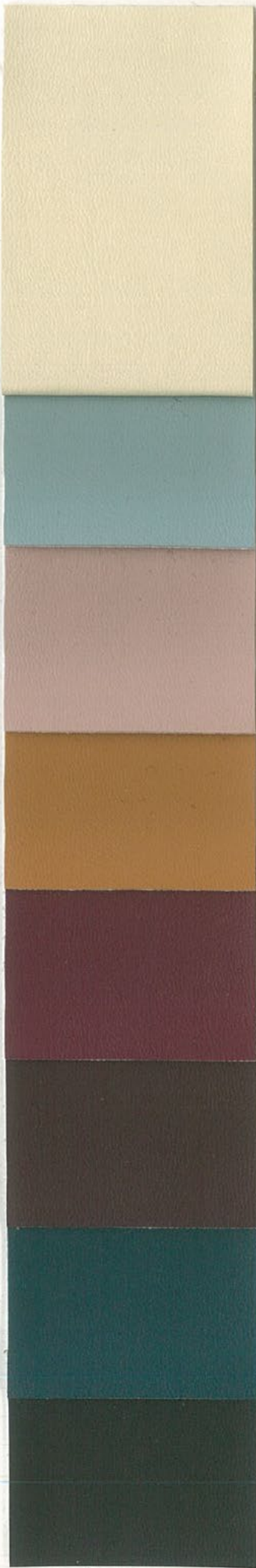
2367

1649

1878

0924

**MAGNUM**  
*Select*



2368

2369

2370

2371

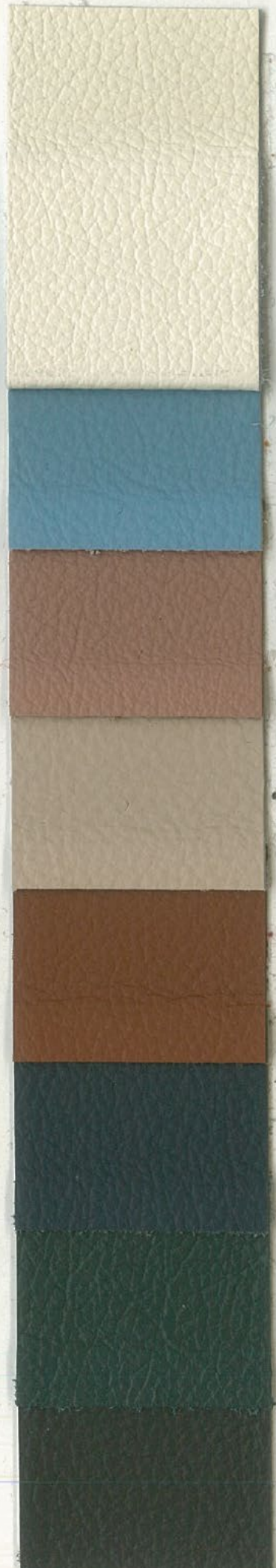
2372

2373

2374

2375

**SOFT UNITO**  
*Tailored*



2397

0953

2399

2398

0643

1181

0954

2439



LUNA  
Select



0989  
0660  
0621  
2377  
1002  
2376  
2190  
2378

FLAMENCO  
Select



0897  
2379  
0871  
2380  
1052  
0898  
1492  
0929

KING L KAT  
Essential



1810  
1119  
1091  
1092  
1838  
1088  
1093  
2381

LASER N  
Essential



2382

2383

2384

2344

2385

2356

2386

2387

TWILLTWENTY  
Tailored



2388

2392

2390

2275

2274

2391

2389

2393

CREDO  
Tailored



2394

2284

2285

2282

2281

2283

2395

2396

**BOEMIAN**  
*Select*

**BRIONNE**  
*Tailored*

**LINARI**  
*Tailored*

